



Faculty of Education and Psychology



History

1863 Jyväskylä Teacher Seminary

1912 Summer University

1912 Scientific Library

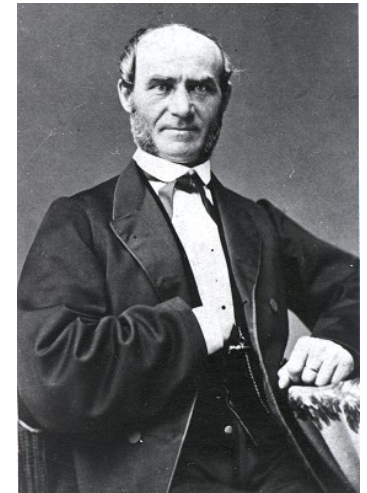
1918 Jyväskylä University Association

1934 Jyväskylä College of Education

1966 University of Jyväskylä

2018 155-year history, 84 years as a higher education institution

Jyväskylä Teacher Seminary seen from Lake Jyväsjärvi.
The Museum of Central Finland



Uno Cygnaeus (1810–1888)
The Father of Finnish Elementary School

Total income around **210** M€
6 faculties

14,000 students
2,500 employees
2,360 person-years





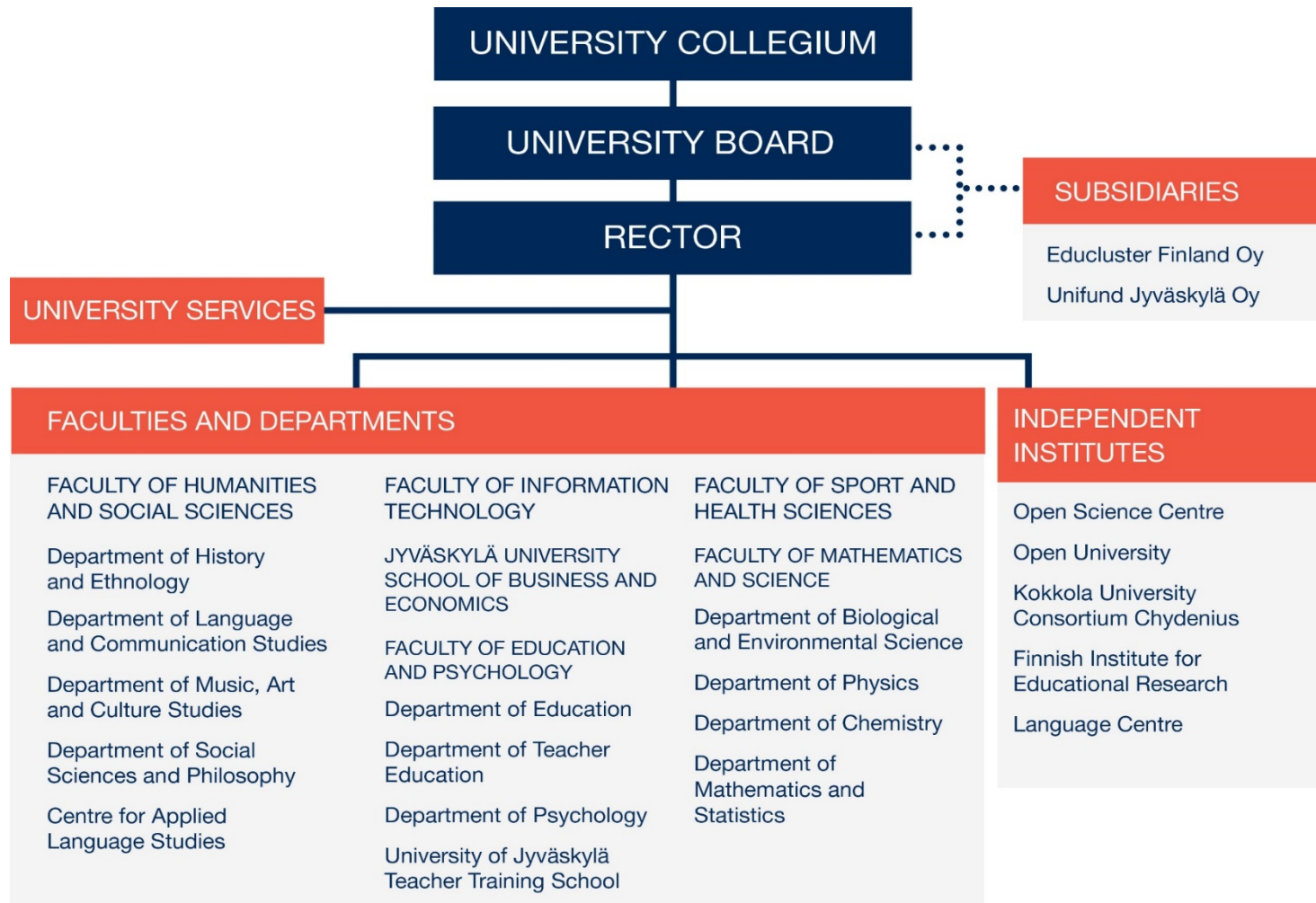
Faculties

A multidisciplinary research university

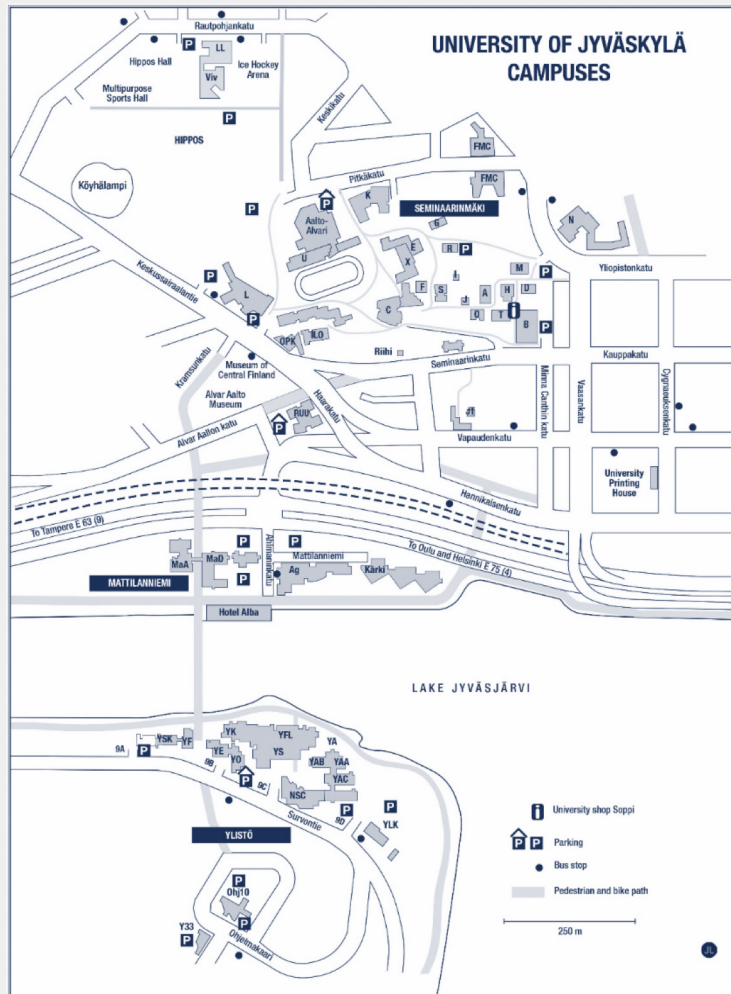
- / Faculty of Education and Psychology
- / Faculty of Humanities and Social Sciences
- / Faculty of Information Technology
- / Faculty of Mathematics and Science
- / Faculty of Sport and Health Sciences
(the only one of its kind in Finland)
- / Jyväskylä University School of Business
and Economics



Organisation 1 January 2017-



Harmony of architecture and nature on three campuses



→ Total area 155,500 square meters

Students of the University, Sep 2018

Faculty of Humanities and Social Sciences	4.134
Faculty of Information Technology	2.609
Faculty of Education and Psychology	2.637
Faculty of Mathematics and Science	1.729
Faculty of Sport and Health Sciences	1.299
Jyväskylä University School of Business and Economics	1.398

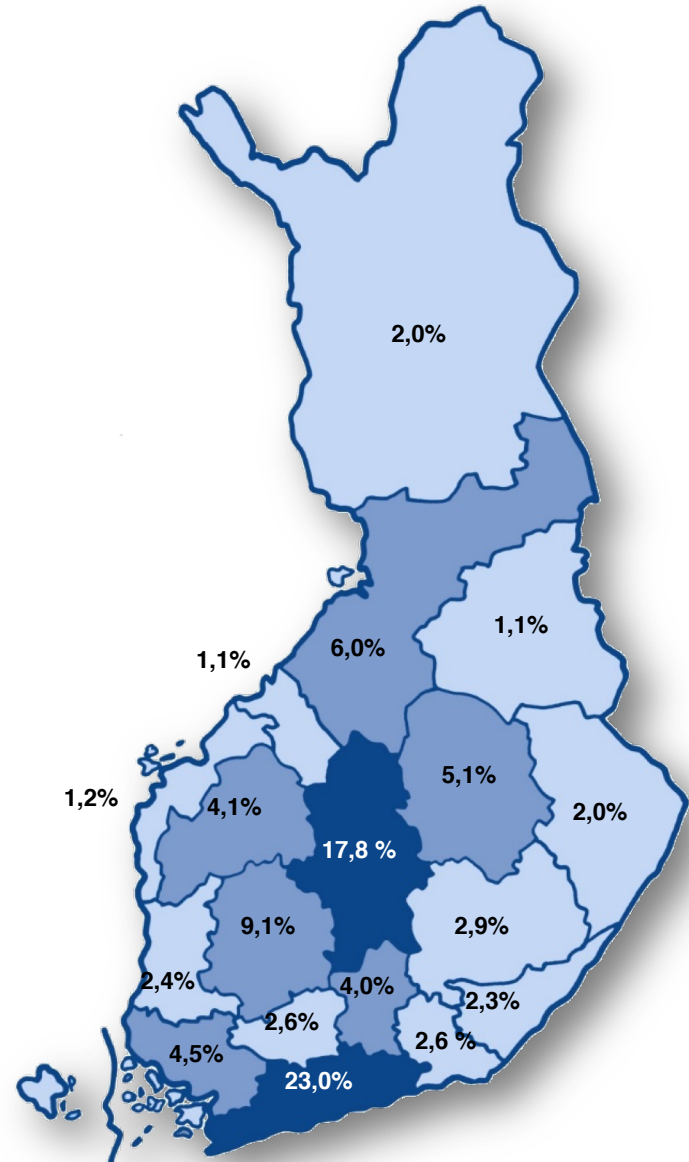
Total 13.806



■ Humanities & social sciences	■ Education and psychology
■ IT	■ Math & science
■ Sport & health	■ JSBE



Where do our students come from?





Core fields

- Learning, teaching and the learning and growth environments that support development
- Basic natural phenomena and mathematical thinking
- Languages, culture and communities in global change processes
- Physical activity, health and wellbeing
- Information technology and the human in the knowledge society

Faculty of Education and Psychology

- **Educational sciences:** professors 21, teaching and research faculty 140, other staff 30, students 2200
- **Psychology:** professors 8, teaching and research faculty 31, other staff 5, students 750

Department of Education

Early Childhood Education

Special Education

Education and Adult Education

Educational Leadership (IEL)



Leena
Halttunen

Department of Teacher Education

Primary school teachers

Pedagogical studies for (secondary school) subject teachers

Guidance and Counselling



Sirpa Eskelä-
Haapanen

Department of Psychology

Psychology



Juha Holma

Jyväskylä Centre for Interdisciplinary Brain Research



Tiina Parviainen

Teacher Training school

(teaching staff 90, non-teaching staff 12)

Basic education (705 pupils)

- Primary
- Lower secondary

Upper secondary (305 students)



Pekka
Ruuskanen



Centre for Research on Learning and Teaching

SINCE 2015 FACULTY OF EDUCATION AND PSYCHOLOGY IS LOCATED IN RUUSUPUISTO BUILDING



**New learning environment represents
our concept of learning**

Teacher education paths at JYU – widest profile in Finland

- Early childhood education and pre-primary teacher (0-7)
- Primary school teacher (class teacher)
- Subject teacher
- Special education teacher
- Adult education teacher
- Sign language teacher
- Study counsellor
- Principal



Putting the LEARNER at the CENTRE in all levels of education

Themes that keep on inspiring us:

- From teaching to learning
- From class-focus to learner-focus
- From "one size fits no-one" to diversification of learning
- Becoming inspired and enthusiastic, learning from others and sharing learning!



Phenomenon-based Curriculum (2017)

1 Interaction and collaboration

- Interactional skills and participation
- Promoting dialogical interaction
- Relations between individuals and groups

2 Learning and guidance

- Individuality of learners and learning processes
- Influence of learning contexts

3 Society and educational change

- Structural changes in society affecting education

4 Scientific thinking and knowledge

- Joint construction of knowledge; Critical evaluation

5 Competence and expertise

- Development of professional expertise
- Professional ethics

Basic studies → Intermediate studies → Advanced studies

Major subjects in the Faculty of Education and Psychology

- Education
- Adult Education
- Early Childhood Education
- Special Education
- Psychology

Master's Degree Programmes (in English)

- MDP in Educational Sciences
- MDP in Development and International Collaboration

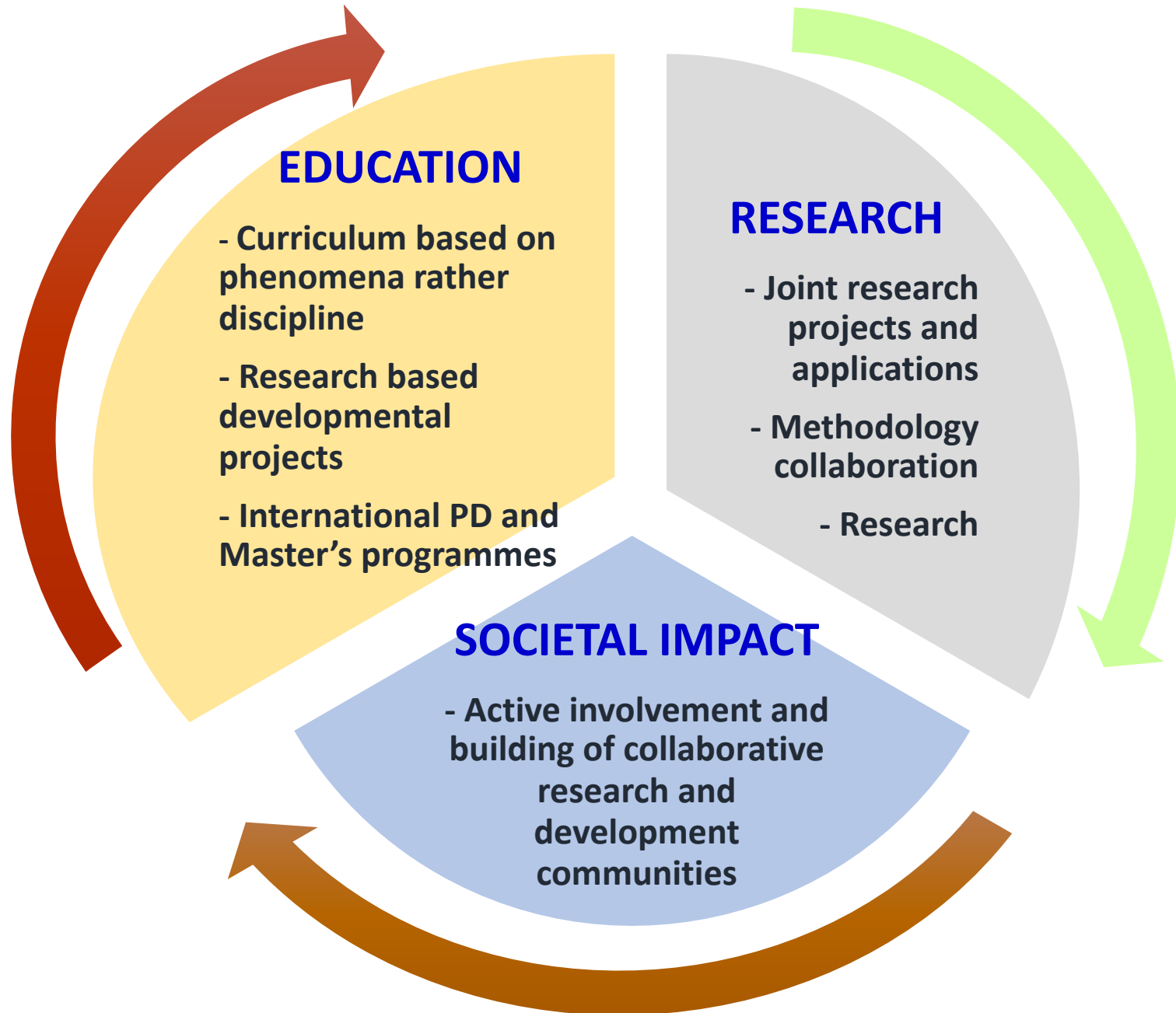
Teacher Education in the Faculty of Education and Psychology

- Kindergarten teacher
- Primary school teacher
(class teacher)
- Special education teacher
- Study counsellor
- Subject teacher
- Principal
- Adult education teacher
- University teacher

International Collaboration

- Several research projects
- Tempus, Comenius, Erasmus projects
- Student exchange:
 - Erasmus+ agreements with over 40 universities
 - outgoing 70 - 90 students/year
(student exchange + internships)
 - incoming 110 – 180 students/year
 - this term 127

Research-based higher education and training



Key fields of research

1) INTERACTION

In learning,
rearing and therapy

2) LEARNING

Learning disabilities,
cognitive development,
emotions and
motivation, digitalisation,
peer relations, neural
basis of learning,
developing brain

3) FAMILY AND CHILDHOOD

Environments of
care and learning,
participation,
parenting, family
relationships

4) WORK LIFE

Learning at work,
well-being,
identity,
agency,
research on
leadership

5) TEACHING, GUIDANCE AND EDUCATION

Pedagogical research,
innovative development
and research on learning
environments and
participation,
internalisation, cultural and
linguistic diversity, equality
in education, well-being,
democracy, agency

Contact information

Elisa Heimovaara
Faculty of Education and Psychology
P.O. Box 35
FIN-40014 University of Jyväskylä
Ruusupuisto B237
Tel. +358 400 247421 (also WhatsApp)
elisa.heimovaara (at) jyu.fi
Skype: r.elisah



JYVÄSKYLÄN YLIOPISTO

21.11.2019

<https://www.youtube.com/watch?v=gtPoGYK4-bY>

<https://www.youtube.com/watch?v=DblltG2-BMQ>



JYVÄSKYLÄN YLIOPISTO

21.11.2019

JYU. Since 1863.

21

JYU. Since 1863.



JYU online

www.jyu.fi



[instagram.com/uniofjyvaskyla](https://www.instagram.com/uniofjyvaskyla)



[facebook.com/JyvaskylaUniversity](https://www.facebook.com/JyvaskylaUniversity)



twitter.com/uniofjyvaskyla



[youtube.com/JyvaskylaUniversity](https://www.youtube.com/JyvaskylaUniversity)

