

# ALT- the school of the future

Made with love by Timi, Lizi, Anna

ANNA DEÉ 11. AUGUST 2022, 14:26 UHR

## inclusiveness and dialogue

- Reflect on how the experiences and backgrounds of your students might influence their motivation and learning.
- Encourage all students to establish or participate in departmental organizations or school organizations that align with their interests.
- Introduce students to the various available campus resources such as campus mentoring programs, workshops, support services, and resource centers.



## Summative forms or feedbacks?

- Vary your teaching and assessment strategies to address diverse learning modalities and preferences (ex: individual/collaborative learning).
- welcome feedbacks and reflections

## Formative Assessment

Formative assessment may be integrated in all parts of the lesson: before the lesson, during the lesson, and after the lesson.

### Before the Lesson



**Learner:** Understands the lesson's purpose and identifies what they know about the topic.  
**Teacher:** Determines what the learner knows and can do.

### During the Lesson



**Learner:** Monitors one's progress.  
**Teacher:** Tracks learning progress in comparison to formative assessment results before the lesson.

### After the Lesson



**Learner:** Recognizes whether they have met the learning objectives.  
**Teacher:** Assesses whether learning objectives have been met.



Based on DepEd Order No. 8 s. 2015. Read more about it at [deped.gov.ph/orders/do-8-s-2015](https://deped.gov.ph/orders/do-8-s-2015)

#GoKto12 | For more information, visit [deped.gov.ph/k-to-12](https://deped.gov.ph/k-to-12)



## Connections

- Experiencing theory through lived practice.
- Learning outside of school. (Visiting museums, having a lesson in a nature etc. )
- participating a role-play is important part in child's development

## Rules

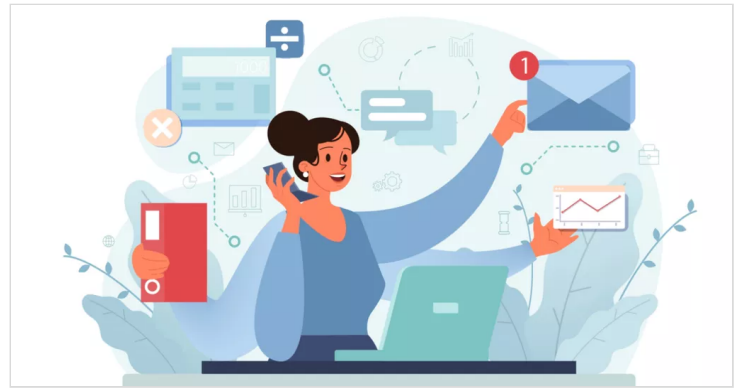
- Having rules are important part of creating successful classroom
- Children should participate in rule making.
- Everyone including the teacher should be aware of the rules.
- Rules should reflect shared values and beliefs.
- Breaking the rules should be discussed and talked through.



## skills

1. Every teacher has special skills and they are free to decide how to use them.
2. They also have the opportunity to develop and implement their individual interests and skills
3. This will lead them to contribute their personal strenghts to the school's work.
4. They have opportunities to develop their skills as well, and get some new ones.

Result: teachers are able to see the strongs skill that children have both individually and as a group. Pupils will have the materials thout to them in the way it suits their skills the best.



## well-being

### 🍓 Phisically

- o Good quality food
- o Some daily phisical activities
- o Higene products provided
- o Regular checkups
- o Time to rest

### 🧠 Mentally

- o Using icebreakers as warm up activities in the beginning of each class
- o Paying attention to the children's mood and feelings
- o Letting children acknowledge their emotions, giving them uninterrupted time to vent out their worries and frustrations
- o Encourageing them to talk about their feelings
- o Creating a coping kit with some techniques and methods



\*\*\*\*\*