

Griffith University

Chanelle Baker, Regional Marketing Manager – Europe & Scandinavia
c.baker@griffith.edu.au

Queensland Australia



Make it Matter

Chanelle Baker, Regional Marketing Manager –Europe & Scandinavia



Queensland Australia

Make it matter



About Griffith

- Ranked in the top 2% of universities worldwide.*
- Committed to inclusion, diversity, social justice and to creating an equitable, cohesive and environmentally sustainable society.
- Australia's most awarded teachers.*
- Recognized worldwide for our commitment to sustainable development.**
- 20+ Research institutes and centres.

*In four of the largest and most credible world university rankings, Griffith is rated in the top 300. These are the 2023 Times Higher Education World University Rankings: 251-300, 2022-2023 University Ranking by Academic Performance: 259, 2022-2023 US News Best Global Universities: 203, and the 2023 QS World University Rankings: 300.

*Griffith has received more Australian Awards for University Teaching than any other university, since 2012. We have won: 3 Australian University Teacher of the Year awards, 8 Teaching Excellence awards, 6 Awards for Programs that Enhance Learning 42 Citations for Outstanding Contributions to Student Learning.

**Ranked against the UN's 17 Sustainable Development Goals (SDG's)



45,000+ Students



200,000+ Graduates



200+ Degrees



130+ Nationalities



4,000+ Staff



4 Campuses



Architecture,
construction and planning



Business and
government



Criminology &
law



Education



Engineering, IT and aviation



Humanities, languages
and social science



Medicine, dentistry
and health



Music and
performing arts



Science and
environment



Visual and creative arts

Rankings at a glance



**Times Higher Education
World University 2025
Rankings: 251-300**



**University Ranking by
Academic Performance:
259**



**US News Best Global
Universities 2023-2024:
239**



**CWTS Leiden Ranking
2024: 264**



**Academic Ranking of World
Universities:
201-300**



**QS World University
Rankings: 2568**



**National Taiwan
University Ranking: 332**



**THE Impact Ranking
2025:
#2 in Australia**

<https://www.griffith.edu.au/about-griffith/our-university/ratings-and-rankings>



**#1 in Queensland
#2 in Australia*
#4 globally***

*2025 Times Higher Education (THE)
Impact Rankings*

*Tied Rankings



Ranked #1 in Australia for

SDG 6 - Clean water and sanitation
SDG 7 - Affordable and clean energy
SDG 8 - Decent work and economic growth
SDG 14 - Life below water
SDG 16 - Peace, justice and strong institutions

*2025 Times Higher Education (THE)
Impact Rankings*



Subject Rankings

Top 10-20

- Nursing and Midwifery (third globally, tied first in Australia)
- Hospitality and Tourism Management (fourth globally, first in Australia)
- 2nd in Queensland QS Sustainability Rankings 2024
- 2nd In Queensland THE Impact Rankings 2024
- 3rd-South-East Queensland on Leiden 2024
- Performing Arts (5th in Australia)

Top 50-150

- Business Administration (21st globally)
- Marine/Ocean Engineering is now (32nd globally, second in Australia)
- Sports related subjects (48th globally)
- Dentistry and Oral Sciences
- Ecology
- Education
- Law & Criminology
- Computer Science and Engineering
- Energy Science and Engineering
- Material Science and Engineering
- Nano Science and Nano Technology
- Water Resources

<https://www.shanghairanking.com/institution/griffith-university>

<https://www.topuniversities.com/subject-rankings/2023>

<https://www.griffith.edu.au/about-griffith/our-university/ratings-and-rankings>



Subject Rankings

Top 151-200

- Oceanography
- Political Sciences
- Psychology
- Sociology

<https://www.griffith.edu.au/about-griffith/our-university/ratings-and-rankings>

A multi-campus university

- South Brisbane (Nathan) -17,000+
- Brisbane City (South Bank -3500+
 - Queensland College of Art & Design
 - Griffith Film School
 - Queensland Conservatorium
- Logan -2500+
- Gold Coast -18,000+





Gold Coast



Brisbane

LIFE IN QUEENSLAND



300 days of sunshine a year



Winter: 9-21°C 48 - 70°F
Summer: 19 - 29°C 66 - 84°F



Brisbane population: 2.62 million
Gold Coast population: 730,000



Transport: Bus, train, ferry, tram,
international and domestic airports



Brisbane: One of the world's most
liveable cities



Brisbane: Host city of the 2032 Olympic
Games

<https://www.griffith.edu.au/life-at-griffith/off-campus>



Inclusion

- We embrace diversity and inclusion to ensure that our community are provided a safe, supportive and productive environment.
- Griffith University has recently demonstrated its commitment to LGBTIQ+ equality and inclusion by creating colourful Progress Pride Flag crossings at both Nathan and Gold Coast campuses.



Sustainability

Our 2025 goal commitment to continuous improvement in sustainability has been met, and will continue achievements by:

- embedding the SDGs in University teaching, research, and operations
- Protecting our diverse ecosystems across all campuses
- halving carbon emissions by 2030; with the goal of net zero carbon emissions by 2050

Ranked:

- 2 in Australia within the global THE Impact Rankings for performance against UN SDG's (sustainable development goals)*
- * THE Impact Rankings



Gold Coast campus

Nathan campus

Nathan campus

12.9km to Brisbane City

🚗 Car = 15 minutes

🚌 Bus = 20 minutes

🚲 Bicycle = 50 minutes



South Bank campus

Queensland Conservatorium of Music

Queensland College of Art

Griffith Film School



South Bank Brisbane



2026 Key Dates

Trimester 1

23 - 27 February	Orientation
4 March – 29 May	Teaching
1 – 3 June	Study days
4 – 13 June	Exams

Trimester 2

6 – 10 July	Orientation
13 July – 9 October	Teaching
12 – 14 October	Study days
15 – 24 October	Exams

Trimester 3

26 October – 30 October	Orientation
2 November – 5 February (2027)	Teaching
8 – 10 February (2027)	Study days
11 – 20 February (2027)	Exams

<https://www.griffith.edu.au/academic-calendar-key-dates>





Academic Merit Scholarships

20% International Academic Merit Scholarship:

For students applying for undergraduate and postgraduate coursework degree programs. Covers 20% of tuition fees for the duration of the program.

Automatically awarded when application submitted

50% Vice Chancellor's International Scholarship

Rewards exceptional students applying for undergraduate and postgraduate coursework degree programs. The scholarship covers 50% of tuition fees for the duration of the program.

Separate Application is required.

<https://www.griffith.edu.au/international/scholarships-finance>

1-Year Masters pathways

Griffith Business School

5629 Master of Marketing –GC, NA

5311 Master of International Business –NA

5754 Master of International Relations –NA

5724 Master of Global Development –NA

5748 Master of Human Resource Management and Employment Relations GC, NA

5592 Master of Finance –NA

5746 Master of Financial Technology –NA

5683 Master of Professional Accounting –NA

5755 Master of Financial Crime Investigation and Compliance –NA

Health

Master of Health Services Management –SB

Master of Public Health –GC

Entry Example: A recognised Bachelor degree (or higher) in a *related discipline with a minimum grade point average of 4.0 using a 7.0 scale; AND a minimum 2 years full-time (or equivalent) relevant ^professional experience.

<https://www.griffith.edu.au/study/degrees>

1-Year Masters pathways

Sciences

8726 Master of Cyber Security –GC, NA, SB

5660 Master of Engineering Project Management –GC

5593 Master of Environmental Engineering –NA

5642 Master of Civil Engineering –GC

5770 Master of Data Science –GC, NA

5612 Master of Information Technology –GC, NA

5611 Master of Environment –NA

5731 Master of Catchment Science –NA

Arts, Education and Law

5757 Master of Teaching English to Speakers of Other Languages –N*A

5729 Master of international Law –GC

5774 5735 Master of Education –MG

Master of Cinematic Arts –SB

5663 Master of Visual Arts

Entry Example: A recognised Bachelor degree (or higher) in a *related discipline with a minimum grade point average of 4.0 using a 7.0 scale AND a minimum 2 years full-time (or equivalent) relevant ^professional experience.



Study Abroad

- **Study Load:**
 - 4 courses/ subjects = 40CP / 30 ECTS
 - 3 courses/subjects = 30CP/ 22.5 ECTS
- Students can study minimum of 3 and maximum of 4 courses (subjects)
- **Subjects:** 10 credit points = 7.5 ECTS
- **Study Level:** Bachelor and Master students
- **2024/25 teaching periods:** T1 (Feb-June), T2 (July-Oct), T3 (Oct-Feb)
- **English Tests:** Home Edition or Online tests **NOT** Accepted

<https://www.griffith.edu.au/international/global-mobility/inbound>



Study Abroad

Study Abroad Fees per trimester:

3 courses 30CP / 22.5 ECTS:
2026: \$8944

4 courses 40CP / 30 ECTS
2026: \$11,925

Subject/course: 10 Credit Points (CP) = 7.5 ECTS

Over 300 pre-approved courses available

Course code levels:

1: 1st year

2: 2nd year

3: 3rd Year

4, 5, 6, 7 postgraduate/ master level

www.griffith.edu.au/global-mobility-inbound

Example of Popular Courses

2101LHS	Australia and the World
1004GBS	The Purpose of Business
1007THS	Tourism, Travel and Technology
2004MKT	Consumer Psychology
1008GBS	Business Decision-Making
1084LHS	Modern Standard Chinese (Mandarin) 1A
1001GIR	International Relations
1506LHS	Communication and Culture
2029MKT	Advertising and Integrated Marketing Communications
1007GBS	The Future of Work
1008PSY	Interpersonal Skills
2101GIR	The Politics of Environment and Sustainability
2128IBA	The Management of Business Processes
2219THS	Event Management Principles
1001PSY	Introduction to Psychology 1
1515QCA	Thinking through Drawing
2315THS	Event Marketing and Sponsorship
1007LHS	Understanding the Social World
1710LHS	Introduction to Social Science
1011PSY	Psychology in Professional Contexts



Griffith Innovation Challenge (3031IBA)

- Usually available T1 and T2 at both Gold Coast and Nathan.
- This course provides an environment to develop and discuss ideas for innovative new products, services, and business models for commercial and social enterprises.
- Students are encouraged to bring their own idea for the “next big thing” and spend the trimester developing and building their idea with a view to either launching a new business or social venture, or to having their idea adopted by business, society, or government.
- Open to undergraduates from all Academic Groups across Griffith. There are no prior-credit-hour restrictions – i.e. this course may be taken in the first, second, or third year.
- Degree and career finder:
degrees.griffith.edu.au/Course/3031IBA

Example Business /Management / Ethics/ Innovation courses

- 2204AFE Financial Institutions Management T1, T3
- Athlete Management Principals T2
- 2129IBAInternational Management T1
- 2030IBA Global Business T2
- 2128IBA Management of Business Processes T1, T3
- 2505LHS Ethical Communication T2
- 2043IBA Innovaton, Creativity & Entrepreneurship T1,2,3
- 3006IAB Creating Ethical & Sustainable Business T2
- 3051IBA Decision Making for Innovation T1
- 3043IBA Digital Innovation T2
- 3040MKT Digital & Social Media Marketing T2

Example of Education Courses

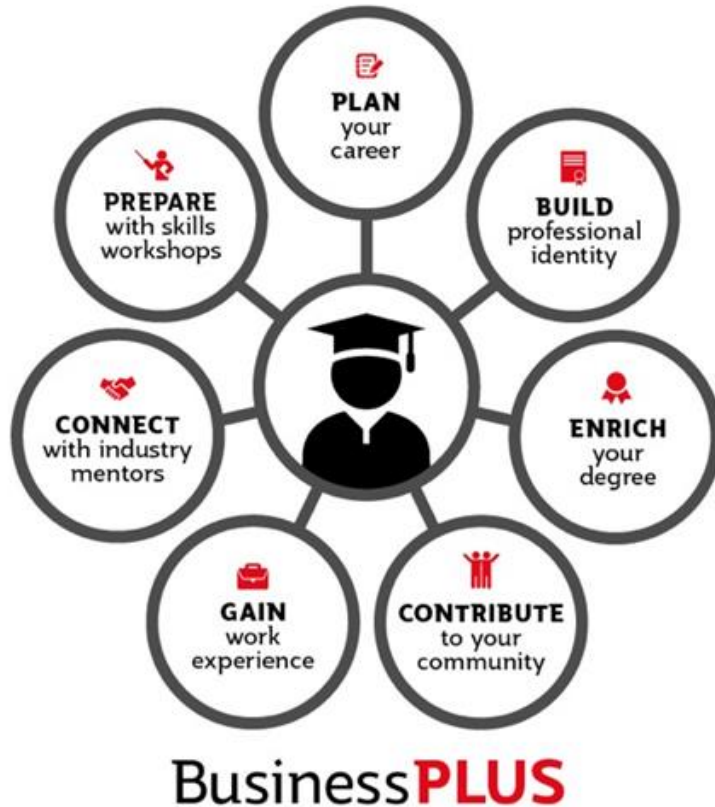
- 1082EDN Scientific Basis of Physical Activity 1: Mt Gravatt & Gold Coast T2-July/ Digital (online)
- 2085EDN Sport Psychology T1-March/Gold Coast, (Online), Mixed Mode
- 3080ECN Health, Physical Education Curriculum-Junior Secondary: T1-March /Mt Gravatt, Gold Coast, Digital (online)

- 3084EDN Motor Development Programming T1
- 3041EDN English Curriculum Formation Junior-Sec T1

- 3107EDN Literacy Intervention T2
- 3300EDN Inclusive Classrooms T2

- 2161EDN Foundation Needs Special Needs T3
- 2244EDN Teaching and Writing T3
- 3404EDN Gender and Literacy T3

Griffith Business School- BusinessPLUS



Kick start your career with BusinessPLUS workshops.

Explore your options, and develop skills and strategies to kick-start your career.

- **Workshop 1:** Self-awareness – how your interests, skills and values inform your career.
- **Workshop 2:** Strategies for finding employment and work experience.
- **Workshop 3:** Applications: resumes, cover letters, online applications, and selection criteria.
- **Workshop 4:** Interviews and developing your professional reputation.

Find out more:

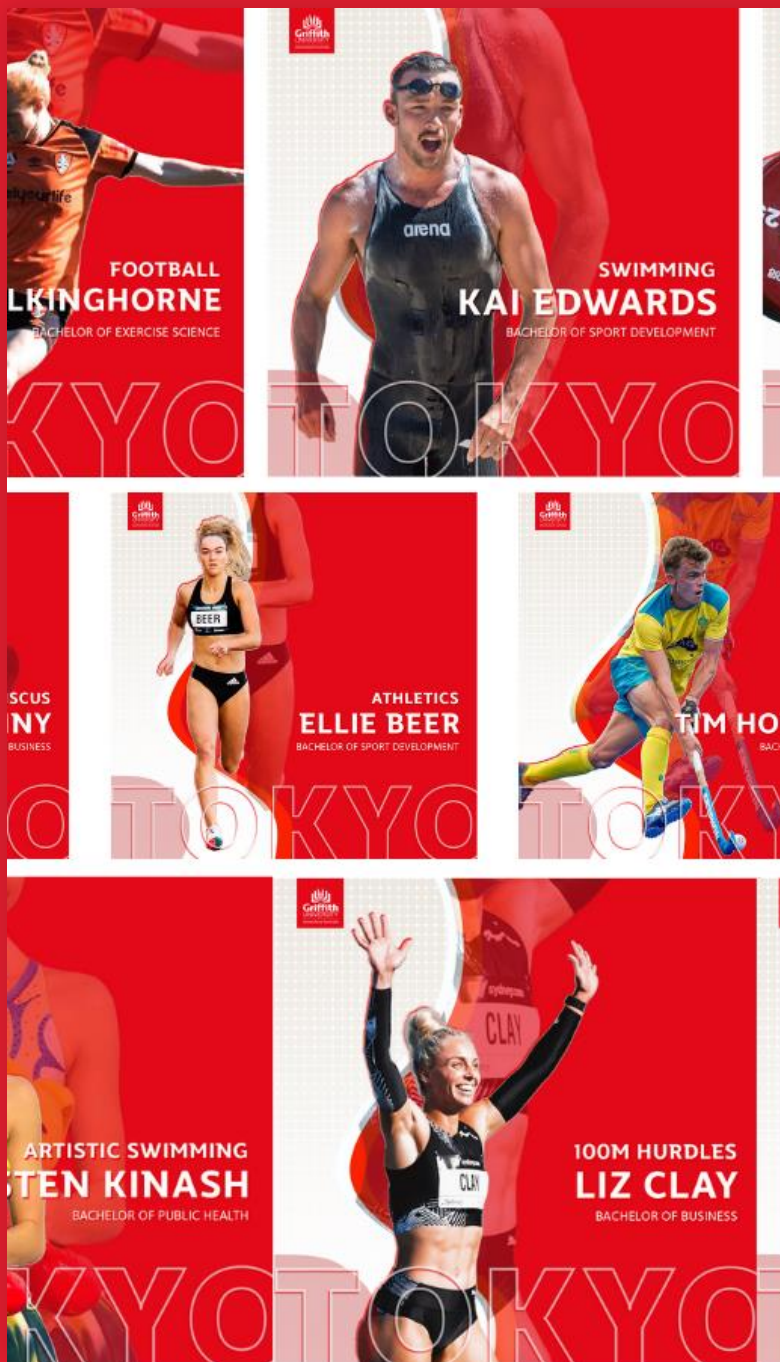
griffith.edu.au/griffith-business-school/student-opportunities/businessplus

Service Learning- Community Internship

Not available to Exchange Students



- Tailored to your study area – over 450 internships available
- Eligible for students who have completed minimum 80CP/60ECTS at home university
- Undergraduate and postgraduate elective course (10CP)
- A minimum 50 hour community-based project with a not-for-profit organisation
- An enriching and reflective experience
- Organisations include: Red Cross, RSPCA, The Salvation Army, Rotaract Club, Reporters Without Borders



Paris Olympics 2024

Team Griffith!

- 38 students, alumni, swimming squad athletes competed
- The Griffith team won a grand total of 24 medals: 10 gold, 8 silver and 6 bronze
- If Griffith were a standalone country, our medal-winning athletes would have place 11th on the overall medal tally. – Above Canada and New Zealand
- **11 students and alumni athletes competed in the Paralympics:**
- 1 gold, 3 silver and 7 bronze

#Paris2024 #MakItMatter

<https://news.griffith.edu.au/2024/07/11/team-griffith-in-paris/>



Sport related programs/degrees

- Bachelor /Master of Business (majors in Sport/Event Management)
- Bachelor of International Tourism and Hotel Management (major in Sport Management)
- Bachelor of Sport Development
- Bachelor of Clinical Exercise Physiology -4 years
- Bachelor of Exercise Science
- Bachelor of Education (major in Health and Physical Education)

<https://www.griffith.edu.au/study/degrees>



Cost of studying

Australia is an affordable and friendly place to study and offers a combination of quality education and good living standards.

The Australian Government requires students have a minimum of AUD\$29,710 per year to cover living costs.*

The total cost of studying in Australia will include:

- tuition fees
- visa application fees
- Overseas Student Health Cover (OSHC)
- flights
- cost of living
- other personal and study related expenses.

• *As at May 2024

<https://www.griffith.edu.au/student-support/cost-of-living>



Work while you study

In Australia you can work part-time while you study, and full time during the break and holiday periods.

- Student visa holders can work 40 hours per fortnight during the teaching period and unlimited hours during scheduled university-wide teaching breaks.

(Full-time: 38-40 hours per week).

- Australia has a high national minimum wage.
- Work rights in Australia mean you are entitled to a healthy and safe work environment, regular breaks.

www.griffith.edu.au/careers-employment



Careers and Employment Service

Improving student and graduate employability.

Help with:

- becoming job ready
- finding work during and after study
- interview preparation and job searching
- writing resumes and cover letters
- learning how to network
- finding a mentor



Accommodation & Free Airport Pick-up

Choose to live on campus at our Nathan or Gold Coast campus or off campus with one of our off-campus partners. Homestay is another option to experience life with a local family initially or throughout your study.

Off campus accommodation is available in the suburbs surrounding each campus and Campus Life/Student Guild provide listings and rental advice.

- Griffith provides a **free 'mini-buss' service** to assist Gold Coast based students to find off campus accommodation during orientation week
- Griffith has established preferred partnerships with a selection of off campus accommodation providers.
- More information: [griffith.edu.au/accommodation/preferred-partners](https://www.griffith.edu.au/accommodation/preferred-partners)

- **Tip!** Accommodation adapted CV:

Previous Landlord rental references / Financial home country government support /Australian Mob Nr. /Hardcopy

<https://www.griffith.edu.au/accommodation>



Pictured: Griffith University Village (Gold Coast)

Accommodation

On-campus

Living on campus is a fantastic way to meet new people, find out about new cultures, and develop independence.

Self-catered accommodation:

Nathan and Gold Coast campuses
(New 450+bed GC-ready 2026)

Find out more

griffith.edu.au/accommodation/on-campus



Accommodation

Off-campus

In Australia, share housing (where you share a house or apartment with other students) is the most common form of off-campus accommodation.

When looking for suitable off-campus accommodation you will need to consider:

- the cost of rent (usually advertised weekly)
- if utilities are included in your rent (electricity, water, gas)
- if internet is included in your rent
- if the accommodation is furnished
- how close the accommodation is to your campus
- access to public transport.

Find out more

- griffith.edu.au/international-accommodation
- rta.qld.gov.au
- qstars.org.au



STUDENT ONE

Preferred supplier:
Student One (Brisbane)
studentone.com

Accommodation

Off-campus

You may wish to organise your long-term off-campus accommodation after you arrive in Australia to ensure you are choosing a suitable living and study environment.

Off-campus accommodation websites:

- realestate.com.au
- domain.com.au
- flatmates.com.au
- semesterinaustralia.com
- bedssi.com
- studygoldcoast.org.au

Find out more

- griffith.edu.au/international-accommodation
- rta.qld.gov.au
- qstars.org.au

Free Airport Pick-Up

Have a friendly face to meet you at the airport when you arrive in Australia!

International students commencing at Griffith can apply for free airport pickup, which takes you from the airport directly to your pre-arranged accommodation.

The service is free for eligible international students arriving into the Brisbane or Gold Coast airports.

This free service must be booked at least 72 hours prior to your departure from your home country.

<https://www.griffith.edu.au/international/plan-your-move-to-australia/life-in-australia/airport-reception>



Student health and wellbeing

- Chaplaincy
- Counselling and wellbeing services
- Health and medical services
- Online health and wellness centre
- Equity and diversity
- Disability and accessibility support
- Student Guild and Student Representative Council
- **International Student Advisory**





Clubs and Societies

- **Wide Range of Clubs and Societies**
 - Over 120+ societies and clubs (Student Guild)
 - Have fun, make friends, enjoy student life!
 - **Social Sport Competitions**
 - Soccer
 - Baseball
 - Rugby
 - **Other club/society examples**
 - Start-up Entrepreneurs Club
 - GUGC Beach Volleyball
 - Environmental Engineering Society
- <https://www.griffith.edu.au/life-at-griffith/clubs-societies>



Griffith Mates

A diverse peer-support network for all students designed to provide:

- International student transition support
- Opportunities to make new friends
- English language development
- Free activities and events
- Community volunteering options, e.g.
 - Beach Care
 - Bush Care
- International Student Buddy Program

<https://www.griffith.edu.au/life-at-griffith/griffith-mates>



Peer - Peer / Talk to us

- Chat with our friendly Student Ambassadors who are all current students and will aim to respond within 24 hours or up to 72 hours over a weekend.
- European Student Ambassador/s:
 - Nikol –Czech Republic: B Science –Major Marine Biology.

<https://www.griffith.edu.au/international/contact-us/community>



Student Experience

Questions?



Thank you