

University homepage > The University > Centres

Centres at Europa-Universität Flensburg

Listen

The Europa-Universität Flensburg is aiming to raise its profile in the field of research. To do this, three research centres are supported by the University in cooperation with the University of Applied Sciences Flensburg. Two additional research centres have been established as central scientific institutions.

Furthermore, the University has a number of central institutions which provide key services.

Research Centres

The Europa-Universität Flensburg supports the establishment of research centres in order to raise its research profile, to increase funding opportunities from third parties and to promote the University's profile. Professors and scientific staff can be members of several research centres, because work in one research centre does not affect affiliation to an institute.

Joint research centres with the University of Applied Sciences Flensburg:



› Interdisciplinary Centre for European Studies (ICES)



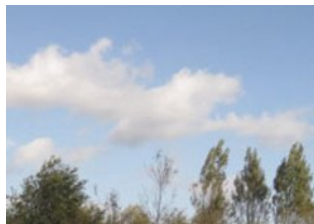
› Centre for Research on Education, Instruction, School and Socialisation (ZeBUSS)

Research centres run in cooperation with the University of Applied Sciences Flensburg

Together with the University of Applied Sciences in Flensburg, the European University is involved in start-up and SME research (DWJZ) and in research into sustainable energy systems (ZNES):



› Dr. Werner Jackstädt Centre (DWJZ)



› Centre of Sustainable Energy Systems (ZNES)

Central Scientific Institutions

The following research institutions are also currently established at Europa-Universität-Flensburg as central scientific institutions:



› **Forschungsstelle für regionale Zeitgeschichte und Public History (frzph)**



› **Norbert Elias Center (NEC)**



› **Centre of Lesser Used Languages and Regional Languages (in formation phase)**

The Centre of Teacher Training (ZfL)

The Centre of Teacher Training deals with the conceptual design and coordination of the school internships that form part of the teacher training program. It also supports research into schools, education and teacher training and represents the Department of Teacher Training of Europa-Universität Flensburg in regional, national and international thematic contexts. In addition, ZfL is responsible for the partial study courses in the field of "Education and Training".



› **The Centre of Teacher Training (ZfL)**

Central Institutions which mainly provide services

Finally, the university has a number of central institutions which mainly provide services. These include:



› **Central University Library (ZHB)**



› **Centre of Academic Further Education (ZWW)**



› **Center of Information and Media Technologies (ZIMT)**



› **Sports Centre**

Back to top Page # 10220 Permalink 04/15/2020

© 2021 Europa-Universität Flensburg (EUF)

[Mobile version](#) [Print page](#) [Open as PDF](#) [Legal notice](#) [Search](#) [Webmail](#)

Europa-Universität Flensburg
Auf dem Campus 1
24943 Flensburg
Germany

Phone: +49 461 805 02
Fax: +49 461 805 2144
Internet: www.uni-flensburg.de

